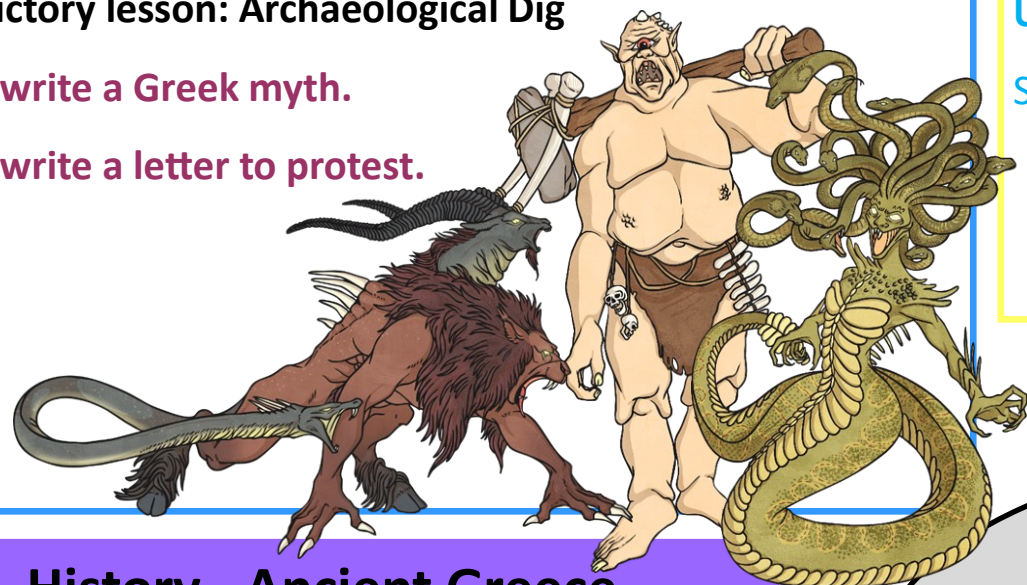


English - Greek Myths

Introductory lesson: Archaeological Dig

LO: To write a Greek myth.

LO: To write a letter to protest.



Maths

Units:

SATs Preparation



Science - Evolution & Inheritance

Introductory lesson: Inheritance Game

LO: To understand the meaning of adaptation.

LO: To identify ideas about the theory of evolution.

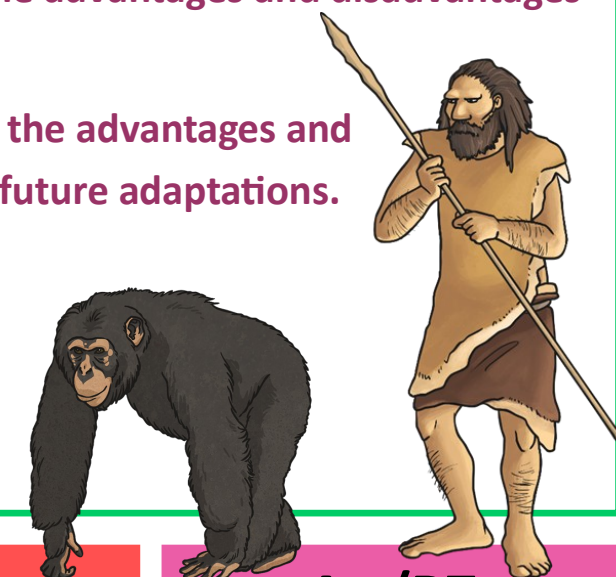
LO: To examine evidence demonstrating how plants have evolved.

LO: To understand how human beings have evolved.

Maths links: data, tables & charts.

EXS: To explain the advantages and disadvantages of adaptations.

GDS: To consider the advantages and disadvantages of future adaptations.



History - Ancient Greece

Introductory lesson: Greek Gods Trading Cards

LO: To understand how and why empires grow.

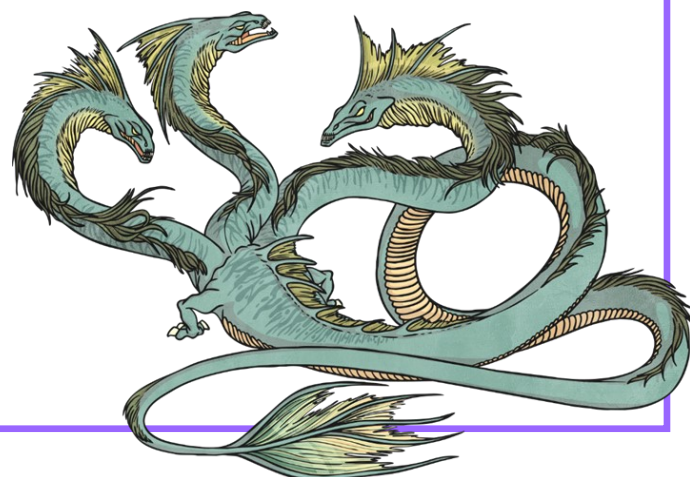
LO: To explain how the political system worked in Ancient Greece.

LO: To explain how the Olympics changed over time.

Maths links: scaled timelines, Venn diagrams & measurement.

EXS: To recount events of the Battle of Marathon.

GDS: To recount the Battle of Marathon considering different perspectives.



Year 6 Summer 1
What makes a hero?

Pre Learning

Modern Greece vs Modern UK

Timeline Activity

Living Fossils

Missing Transitional Forms



Events and Trips

May 13th - 17th SATs Week

May 20th - 24th Waste Week

May 24th - Toga Party



French

En Vacances (on holiday)

Art/DT

Pizza Making

PE

Cricket

Rounders

Music

Song Writing

ICT

Film Making

RE

Sikhism